



# Wave

Red Light Therapy

---

A system of endless treatment options



W W W . C A V A L E R O S . D K

WAVE Red Light Therapy is developed by Cavaleros Denmark.  
We have devised a new way of being able to treat with documented light therapy.

It is almost only the imagination that sets the limits.  
We are constantly developing our product range and making additional products that make it  
easy for you to treat your animal so that it is ready to perform at a top level!

Among other things, there will be more insoles for WAVE Boots and new products for the horse.  
We want to create products that can do more than one thing! We look forward to showing you  
the new products in the future!  
100% Danish design and idea



We would really like to help if you have any questions.  
You must contact your veterinarian if it concerns professional questions that have to do with  
an injury.

We welcome "cases" and feedback from our customers.

Contact us at [customercare@cavaleros.dk](mailto:customercare@cavaleros.dk) or on tel +45 6073 7722

We are looking forward to hearing from you!

Cavaleros Denmark Middelfartvej 6E DK-4200 Slagelse



# Important knowledge before use

The battery is fully charged when you receive your product - so you can quickly start treatment

We recommend using WAVE RLT 3 times daily

Overuse of WAVE can not harm your horse

Always pay attention to your pet when using WAVE and never leave it alone

Animals are sensitive creatures.

Never use WAVE RLT on a tumor unless you do so in consultation with a veterinarian

Do not use the product on lactating or pregnant women - animals or humans.

Be sure to treat your animal if it is being given light-sensitivity medicines such as Tetracycline

Never place your WAVE on a dirty and wet horse / dog

Never let children operate the WAVE RLT

Never use the product if the horse is in water

Protect the cord and the adapter and use only original cables, etc. for use

Using the battery on another product may damage the battery. It is made specially for WAVE so it should only be used for WAVE.

Do not let the animal bite or play with the cord or product. If the product is damaged, do not use it!

Do not let your horse step on the product!

Never apply ointments, creams or anything BEFORE treatment with WAVE

Cavaleros is not liable if your horse / dog or you are injured when using the WAVE products if the reason is gross negligence.

Always consult your veterinarian if in doubt

Never repair WAVE RLT, DC plug, battery or charger

We provide a 2-year warranty against manufacturing defects – not for wear or where the product is damaged due to incorrect use.

The right of complaint is waived if you do not treat WAVE RLT as prescribed



# Important knowledge before use

Never look directly into the light  
Shade the light in front of your animal's eye  
Never leave the product on your horse or animal unattended.  
Put your pet in a comfortable place, preferably in a quiet place.  
Only use the product on a horse that is tied up!  
Never let your horse / dog walk around with the product on  
Use only original chargers or batteries for the product  
Never pull the plug out of the Wave pad WITHOUT holding on to both.  
Never leave your WAVE RLT and batteries in a humid environment  
WAVE RLT can not be put in the washing machine  
WAVE RLT is carefully cleaned with a hard-wrung cloth - and never near the DC socket WAVE RLT is filled with fine electronics, so treat it as you would treat a TV screen.  
WAVE RLT can be bent in all directions but not at the same time! Then it breaks the plate that lies inside. This is not covered as a complaint.  
Care must be taken when bending the WAVE RLT - it must not "crack" the inner plate.  
Never charge the product while using it on the horse!  
Always place a thin cloth against the horse's skin if you are treating an open wound.  
Never have your WAVE RLT on for more than 60 minutes at a time.

NEVER keep your WAVE RLT and battery connected while charging!  
NEVER put your charger and battery in the sun while it is charging. There is a risk of overheating and explosion!  
If you experience odor from the product then stop using it immediately!  
It can create an injury!  
The product can be used in MAX +30 degrees heat and NEVER be left in the sun!  
Only charge the battery for MAX 5 hours - it is a fast charging battery.  
ALWAYS leave your battery far away from flammable objects!  
Leave your battery on a stone floor or tile floor.  
NEVER store your battery in very hot or cold environments or in direct sunlight - store at room temperature 20-25 degrees  
NEVER use a product that is damaged in any way!

Electrical and electronic equipment as well as supplied batteries contain materials, components and substances that can be harmful to human health and the environment if the waste is not handled properly.

As an end user, it is important that you hand over your used batteries to the schemes that are established for this.  
In this way, you help to ensure that the batteries are recycled in accordance with the law and do not unnecessarily burden the environment.

All municipalities have established collection schemes where discarded electrical and electronic equipment as well as portable batteries can be handed over free of charge by citizens at recycling stations and other collection points or are picked up directly from households. Further information can be obtained from the municipality's technical administration.



# How is WAVE RLT different from other similar products?

We have developed a product that is completely unique and has never been seen before! No one has made a system like ours before. Many have made light therapy, but no one has the same ease of use as ours!

We have refined the use of light therapy in a way that makes it usable everywhere on your, your horse's or your dog's body. Durability, ease of use as well as efficiency and a sleek design ...

... that was the starting point for developing WAVE.

We knew that if it became too complicated and cumbersome to use - then it often ends up not being used! Or if the battery had to be constantly be charged, then it would not be used either! We have done something about that!

All products can be put together with velcro and all batteries fit together. So you can always expand and enlarge your purchased product.

Durability must also be top notch!

We have purposefully gone for the best quality. Not only on the design but also on all the other parts!

The battery is the latest technology and fully charges in just 1-3 hours!

It lasts for a really long time - in fact several weeks!



The LED is also the absolute latest technology. We work closely with our manufacturer - and they are specialists this specific type of LED.

LED is not just LED. The effect depends a lot on how much resistance each LED provides and this should preferably not settle as thermal heat (FIR) but must remain in the correct resistance. Many products use old-fashioned technology which requires a huge amount of WATT to give the right amount of power. With the latest technology, not nearly as many watts are required to achieve the correct power.

Every single LED is tested in large test halls, where they are switched on for several days to check the quality and wavelengths are measured before they are sent from the factory. Nothing leaves the test halls until they have passed the many tests.

Our manufacturer supplies lasers and medical equipment worldwide and has all the approvals required to make medical equipment.

Among other things, they deliver to the USA where the light is approved for medical use on humans for pain relief and against inflammation.

Everything is CE approved and sent for testing to ensure that they meet all safety requirements as well as the right specifications.

They are checked for the specific wavelengths and power - so we are absolutely sure that our product lives up to being able to deliver it as they should.

We use double LED so each LED has 2 effects. It has both 660 nm red light and 850 nm NIR (Near Infrared). Most other products run with older technologies which have only one effect in each LED.

We can therefore also guarantee that our products comply with all requirements and that you get an effective product when you have your WAVE product in hand.

We are very proud to have developed a product that meets our very strict requirements! Cavaleros stands for high quality - which you will also be able to see in our product!





Our system is based on versatility and the ability to use your WAVE RLT virtually anywhere on your horse.

If you want to hit the sternum or the buttocks, you can do it easily by changing WAVE Belts (straps)

We have even made it easy for you by developing a smart halter "WAVE Halter" which allows you to treat your horse on the delicate nerve pathways in the horse's skull!

Our pads are solid and durable and can be bent in all directions, however, they must not be bent in two directions at the same time! It can not withstand it!

They are easy to clean and the battery can be moved around with velcro. So you do not experience the battery falling off or sitting in a bad place during the treatment.

Our batteries are the best technology on the market! Lithium-ion: 11.1V / 2200mAh  
DC 12.6V

Charging current: 0.2-1C

This means you do not have to spend time charging them often.

In fact, the battery holds power for several weeks even if you use it every day.

It only takes 1-3 hours to FULLLY charge!



# What can you treat?

- tissue damage
- inflammation
- bruises
- burns
- arthritis - healing / painrelief (horses)
- reduction of scar tissue
- ligament problems
- tendon injuries
- Sore / tight muscles
- sprains
- swelling
- headache
- migraine
- salivary gland problems
- wound healing
- mud fever healing
- effective on acupuncture points / trigger points
- lameness (horse)
- meniscus injuries
- overload injuries both preventively and after exercise

New studies are constantly being added to light therapy. You can read many of them on our site [www.cavaleros.dk](http://www.cavaleros.dk)

One thing is for sure - light therapy is here to stay!



# Treatment of dogs

Treating dogs is very effective.

However, the dogs are more sensitive so the treatment times can be reduced.

However, it is very different from dog to dog.

We find that some dogs even go to WAVE RLT and lie on it.

While others are a little skeptical at first!

Never force the dog to lie under the WAVE RLT

Always keep an eye on it

You can treat the same types of injuries with dogs that you can with horses.

We recommend from 1 minute to 10 minutes treatment of dogs.

Hard-working dogs in particular benefit greatly from light therapy to prevent strain injuries!

You can increase your dog's performance and well-being by using WAVE RLT frequently on your dog.



Kundefoto

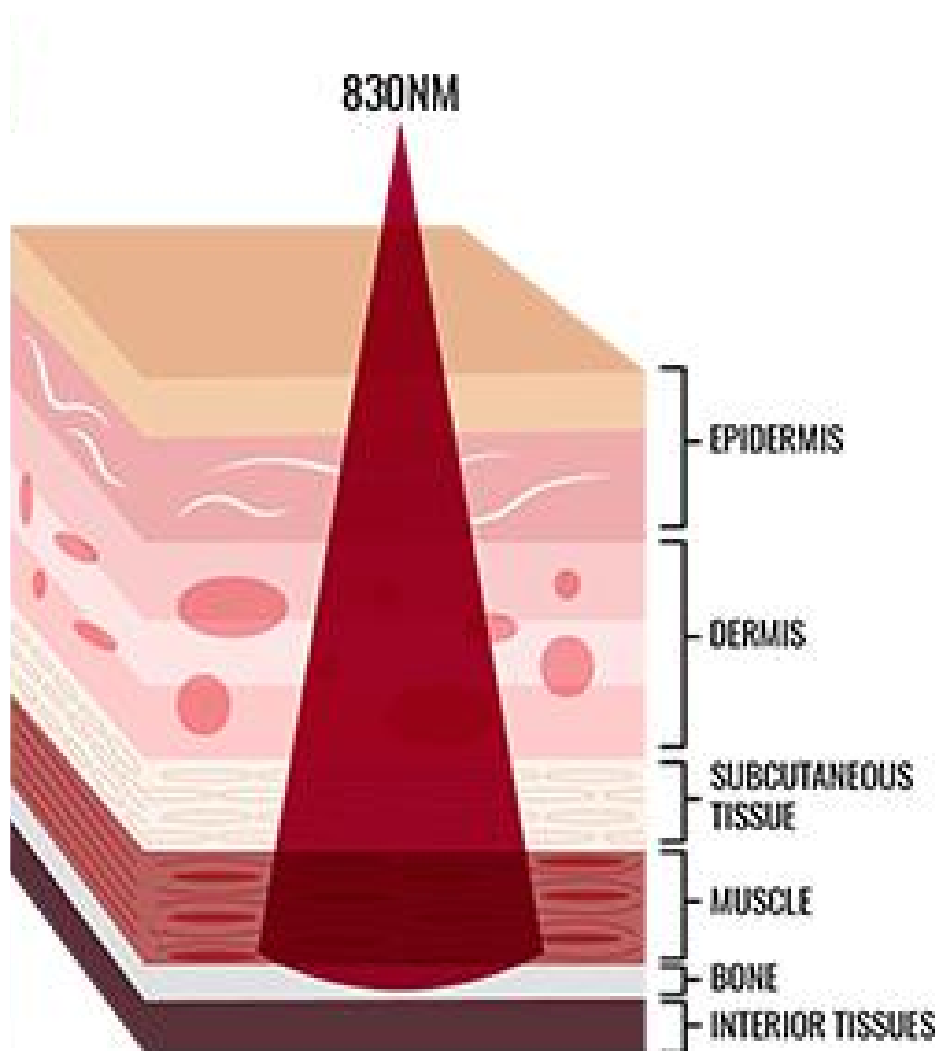
# Why light therapy?

Treatment with red light with a very specific wavelength strengthens cell renewal and is known as an ATP booster. Light treatment has beneficial effect in many areas.

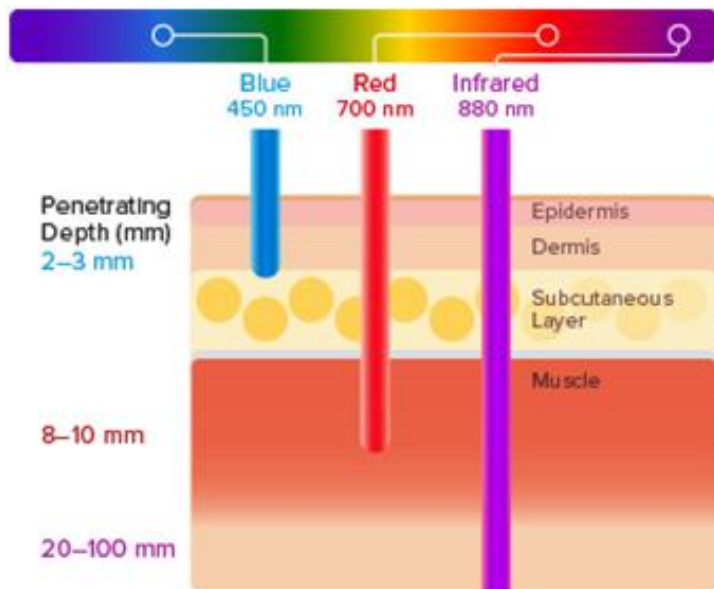
The specific wavelengths of LED therapy lights increase circulation and increase the formation of new capillaries. The new capillaries speed up the healing process by transporting more oxygen as well as more nutrients to the treated areas. At the same time, more waste substances are transported away.

Collagen is the most common protein found in the body and is an important protein that replaces and repairs damaged tissue. Several studies show that LED therapy stimulates the production of collagen and thereby reduces scar tissue.

Light therapy is medically approved for people in the United States and is used as a pain relief



# What do the different wavelengths mean?



The different wavelengths help to determine how deep the treatment is. The most commonly used wavelengths are red and infrared as they reach deep into the tissue.

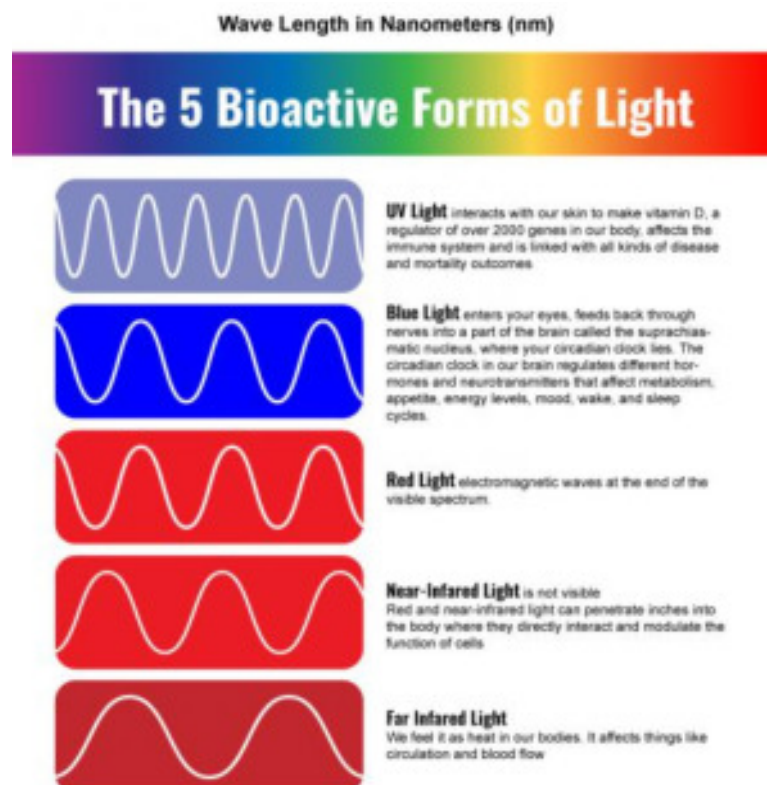
Therefore, red light is also often used to treat wounds as it heals from the inside and not just on the outside. The blue light is typically used for acne treatment as it only works in the top thin layer of skin.

There is a big difference in the use of FIR & NIR.

FIR (Far infra red light) feels like heat and increases blood circulation. It can also be your own body heat that is sent into the body. It has no therapeutic effect on the cells. But provides well-being.

NIR (near infra red light) treats at the cellular level and regenerates the cells and adds energy which is the cells' driving force and provides an effective and documented treatment.

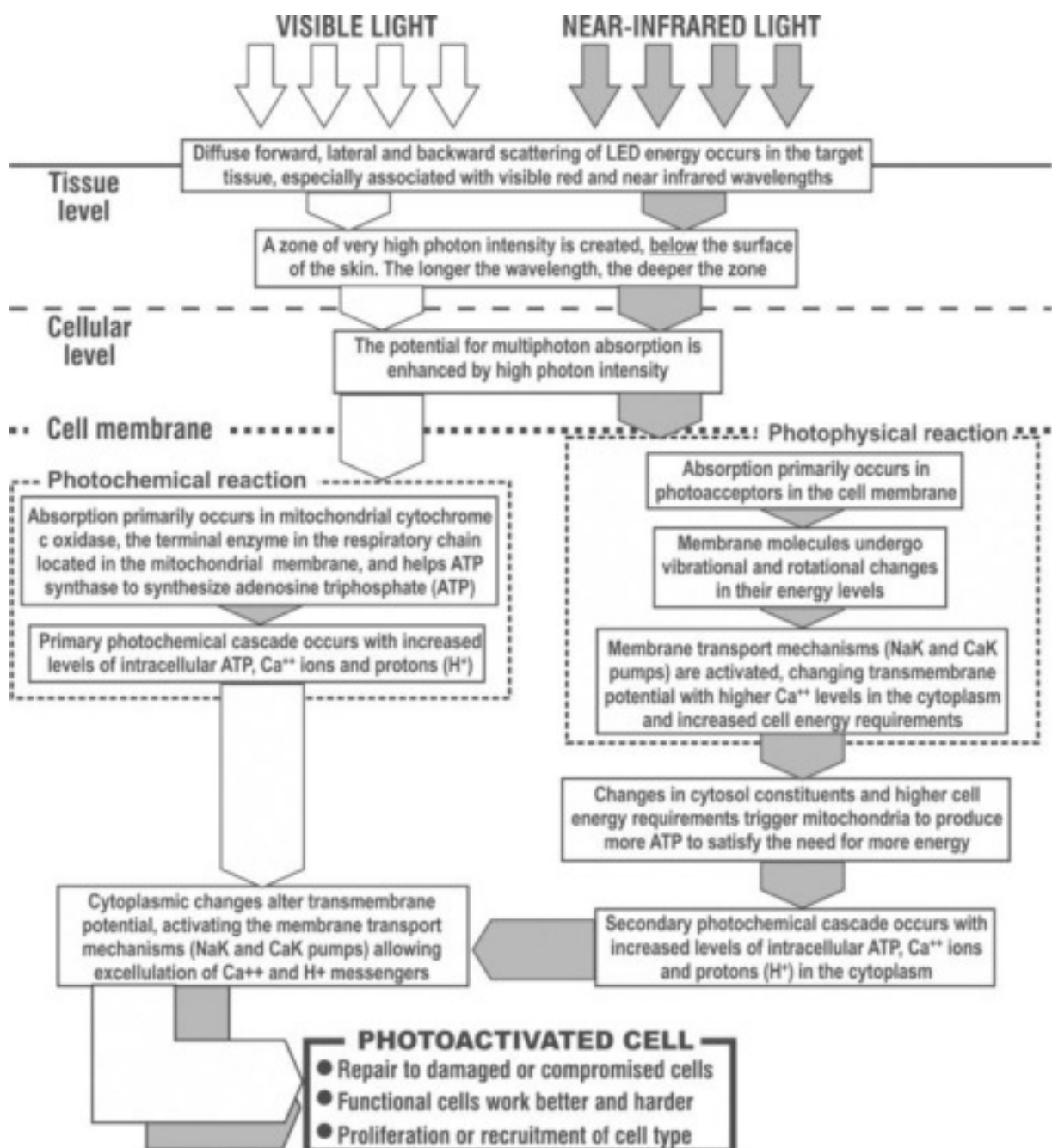
We only use the wavelengths in the spectrum of light that have a documented effect and where studies have been done, namely 660 nm red light and 850 nm Near Infrared light



WAVE RLT stimulates the release of adenosine triphosphate (ATP). ATP is the largest energy carrier for all cells and delivers the chemical energy that drives the chemical reaction in the cell. Increases in ATP allows cells to use nutrients faster and get rid of waste products.

WAVE RLT also increases the activity of the lymphatic system.

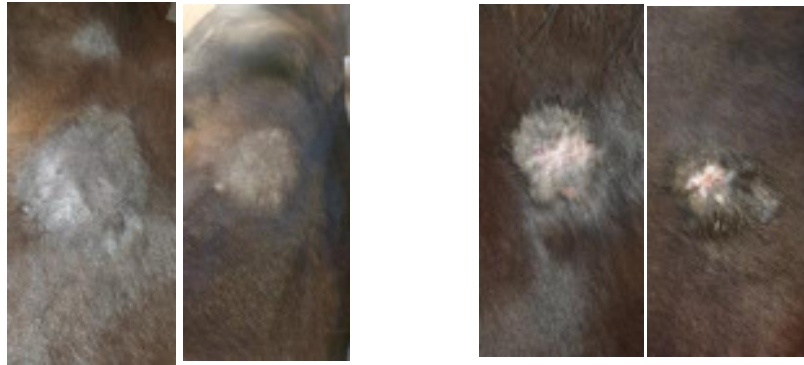
Therefore, one can also see effective treatments with WAVE Red light Therapy. You can experience up to 200% faster healing with light therapy.





# Before & After

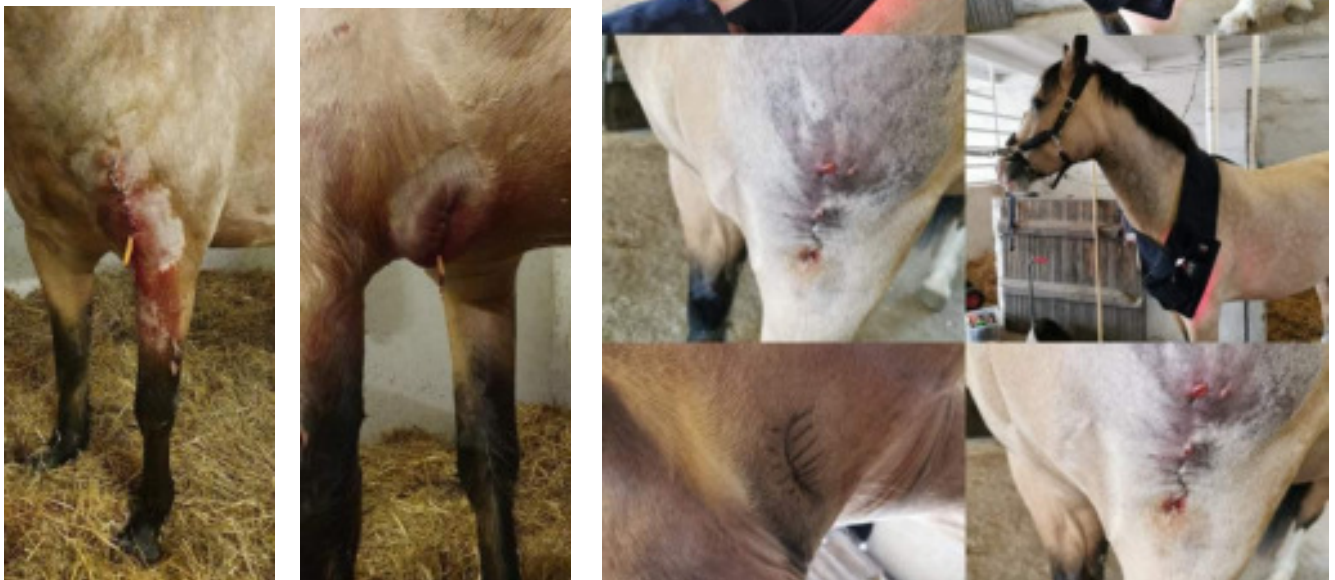
Sacoid on horse  
Before & after 1 week of  
treatment, ones a day



Fungal infection  
2 weeks between photos




ABefore and after  
1,5 month between pictures



# Treatment with WAVE RLT Pads

Light injuries, light pain, maintance Level 1	Medium injuries, medium pain, cronic injuries Level 2	Severe injuries, severe pain, acute injuries Level 3
We recommend 5-8 minuttts in each aera 1-2 times a day	We recommend minimum 10 minuttts in each aera 2 times a day	We recommend minimum 10 minuttts in each aera 3-4 times a day
Extend treatment with 50% for larger mucsle-groups	Extend treatment with 50% for larger mucsle-groups	Extend treatment with 50% for larger mucsle-groups
Continue daily treatment as long as you want	Continue daily treatment for 3-4 weeks. After 3-4 weeks go to level 1	Continue daily treatment for 3-4 weeks. After 3-4 weeks go to level 2



This guide is for WAVE RLT PADS.

This is a guide for WAVE RLT pads - there will always be evasions.  
Always look at your animal- if the animal is calm and enjoys the treatment then you  
can easily continue.

You must stop if your animal changes behavior or becomes restless.

Dogs must have less treatment times than horses.

For them we recommend halving the treatment in the first week

It's always a good thing to ask your veterinarian for advice!

We are always ready to help you if you have any questions.

# How to get started!

Your WAVE RLT is ready for use when you receive it.  
We have made sure that the battery is fully charged and ready for use.

Some velcro straps are included which you should use to attach the WAVE RLT to your horse or dog.

It is important that you start by putting velcro and WAVE RLT on without the battery at first. So you can see the reaction of your animal.

Then attach the battery to the WAVE RLT near the DC socket.

Then you connect the 2 wires together and WAVE RLT turns on and the treatment starts.

You turn it off by unplugging the wires.

It is important that you place the WAVE RLT as close to the skin as possible.  
The strongest light waves 850 nm penetrates between 20-100 mm into the tissue depending on the tissue type.

We recommend that you use your WAVE RLT approx. 1-3 times daily

We have good experience with using it BEFORE and AFTER training, as well as increasing the number of treatments when there is an injury.

Always ask your veterinarian for advice. Light therapy can not replace a visit to the vet.

In the following pages we have created a guide on how to use our system.



# How to apply WAVE RLT in WAVE Boots

You open your WAVE Boot.

You remove the FIR insert (heating insert) included in the WAVE boots. Or you can leave it in, and place the WAVE RLT pads directly in the boots. Inside there is a strip of velcro on which you lay WAVE RLT Small / Medium on longways, with the DC plug on top.

Then gently lay the WAVE Boot on your horse's leg.

You can use WAVE RLT Small upright (as on image) or horizontally.

Medium can only be used upright

Can only be used with WAVE Pad Small & Medium in WAVE Boots

If you use MEDIUM in BOOTS, make sure that WAVE RLT does not bend backwards if the horse bends its leg!

We do not recommend MEDIUM in size Pony / Cob BOOTS

Never attempt to wrap LARGE around the leg. It is ONLY used for the large muscle groups.





You staple it with the velcro so it sticks.

It must not come too far down so that the horse can step on it. Only proceed when your horse is standing still.

Then you remove the top wide velcro with the WAVE logo which is on the WAVE Boot.

Then attach the WAVE battery to the top of the WAVE Boot. Make sure it is firmly seated.

Then connect the cord to the battery. Treatment has begun.

After treatment, gently remove the battery by holding it with both hands and pulling it apart.

Avoid tearing the cord.

Never remove the product from the horse with the battery on.

You can reuse the same WAVE Boot for the other leg or use the stocking for the opposite leg. You repeat the treatment.



# How to apply WAVE RLT in WAVE Halter

Due to the many nerves and tensions in the horse's head, you will experience a great effect with the treatment of WAVE RLT on the head of your horse.

It is especially good for tongue bones, pain from teeth, pain from pressure, etc. You put your halter on the horse.

Your horse must be tied up. And it must stand still before you continue. It should preferably not be eating at the same time.

You loosen the carabines on the right and left side so that the bottom piece hangs loosely. You remove the velcro that sits inside 3 places in the halter.

1 on each side of the jaw and 1 on the middle piece.

Then take your WAVE RLT Small.

You attach the WAVE RLT to the velcro on both sides of the halter. First on the jaw.

If your horse is very wide around the jaw, you can attach it on one side and the bottom piece will hold the Wave RLT.

You close both carabines.

Now you are ready to attach the battery.

Choose a place where there is plenty of space near the DC plug.



Only proceed when your horse is standing still.

You plug in the WAVE RLT and the processing is in progress. Avoid rolling the wires around the halter!

In a panic situation, you must first remove the battery and it must be able to be taken off quickly without damaging the product.

Connect the wires. Treatment has begun. Wait 3-5 min.

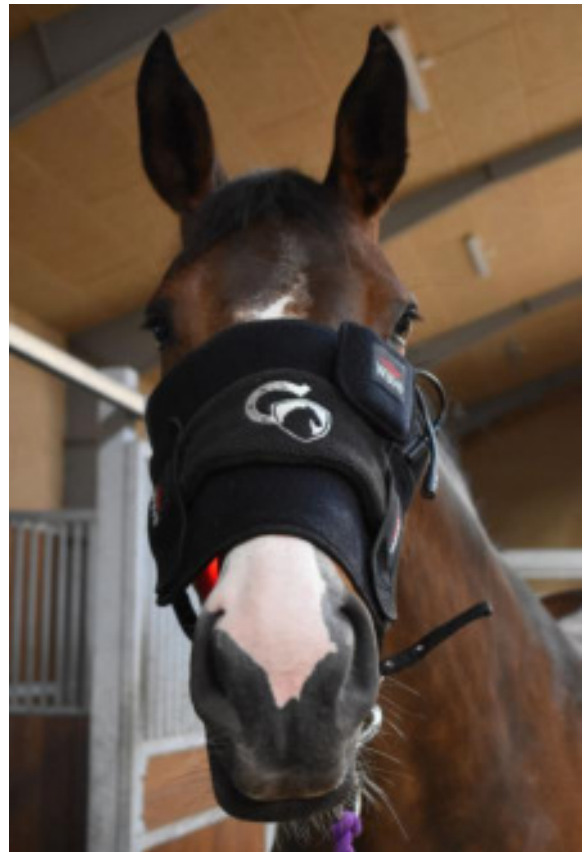
At the end of the treatment, disconnect the wires. Carefully hold the cord and battery and disconnect.

Avoid tearing the cord.

Never remove the WAVE RLT with the light on! It can hurt your horse's eyes to look into the light.

After removing the WAVE RLT. Put the velcro pieces back on the halter.

You can basically treat the entire horse's head with WAVE RLT Small & Medium



# How to apply WAVE RLT in the neck area

You put the halter on your horse. You can use the WAVE Halter to your advantage.

Your horse must be tied up. And it must stand still before you continue. It should preferably not be eating at the same time.

Then take your WAVE RLT Small.

Lift up the neck piece on the halter and carefully place the WAVE RLT Small under the halter longways so that it covers a large area.

You use the WAVE Belt S to attach the WAVE RLT Small to the halter so that it fits snugly and cannot move.

Put one on each side.

Be careful if you use the Medium size. Our experience is that Small fits the neck best. Always be careful when applying WAVE RLT to the neck - never push the pad under. But make sure there is plenty of space.



Now you are ready to attach the battery.

Choose a place where there is plenty of space near the DC plug. Only proceed when your horse is standing still.

You plug in the WAVE RLT and processing begins.

If you have an extension cable, put it in the battery first and then in the WAVE RLT.

Avoid rolling the wires around the halter!

In a panic situation, you must first remove the battery and it must be able to be taken off quickly without damaging the product.

Connect the wires. Treatment has begun.

Wait 3-5 min. Can be extended as needed

At the end of the treatment, disconnect the wires. Carefully hold the cord and battery and disconnect.

Avoid tearing the cord.

Never remove the WAVE Pad with the light on! It can hurt your horse's eyes to look into the light.





# How to treat the hock

You can treat pretty much anywhere on the horse's body with your WAVE RLT.

Also on moving joints that just need a fast and efficient healing. It can be difficult to have it stick - especially the hock

But not with WAVE.

You will need WAVE RLT Small + 3 Small straps or 3 Medium straps depending on the size of the horse.

This horse is 175 in stg and uses 2 Medium and 1 Small (bottom) You could also easily use Small for this size horse.



Always make sure the horse is standing still and not trying to kick off the WAVE RLT. Do not attach the battery until the horse is calm.

The horse must ALWAYS be tied up and supervised. Never walk away from your horse while it is being treated.

Always place the battery on the outside.

Carefully insert the DC plug into the WAVE RLT. The treatment has started.

Maintenance: 3-5 min

Treatment: 6-8 min



Has

With the same straps, you can treat the front of the knee as well



# How to treat stifle

There are many horses that suffer from knee locks - seen frequently on young horses!

We have created a system that allows you to effectively put your WAVE on the back of your horse's stifle. Particularly effective after removal of Osteochondritis - for rapid healing.

You need WAVE RLT Small or Medium. In the picture a Small is used.

2x XL Straps + 1 XXL (placed over the loin of the horse) You can measure your horse if you are in doubt about the length.







2 WAVE RLT can be used simultaneously for fast processing. Possibly a large  
Always be careful. Make sure the horse does not step on the WAVE RLT.  
There is expensive electronics inside - which can not withstand it.

However, we have experienced the horse stepping on the WAVE RLT without anything  
happening.  
But it will not be covered by the warranty if it breaks from the weight of a hoof.

# How to treat the sternum



How to treat the sternum

It is extremely effective in treating the horse's sternum.

We know from masseuses and other therapists that horses often have problems there. Tension and sore muscles.

We have developed a system where you can treat your horse effectively on the sternum in no time. While doing something else, for example!

Now you do not have to hold a light therapy mat to give your horse a treatment. You have your hands free while your horse receives light therapy.

You can use both Small & Medium WAVE RLT - the image is shown with Small RLT. The horse is 175 in stg.

You will need 2 X XL for the shoulder. 1 Large for between forelegs.

1 x 3XL around the belly or 2 x XXL depending on the horse's girth size.

# How to treat the lower back



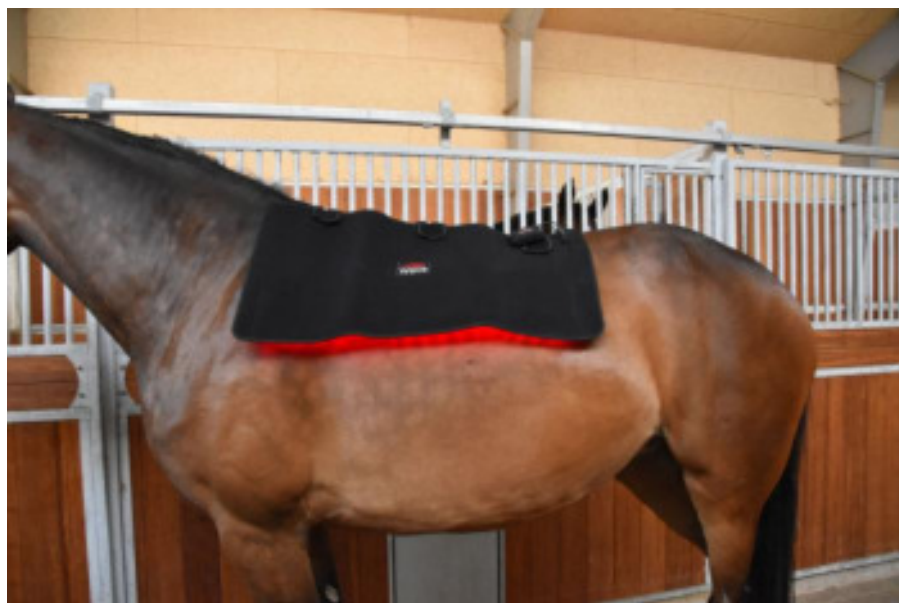
You can use Small, Medium or Large WAVE RLT for the lower back and topline. It is clear that the larger the WAVE RLT is, the more effective and fast the treatment will be.

All WAVE RLT can be paired with velcro. So you can easily create the size that will fit the area you want to treat.

You can give large muscle groups a longer treatment. 10-20 min. Always keep an eye on the horse when treating the large muscle groups.

Never switch on the WAVE RLT for more than 60 minutes without a break.

The LED therapy lights have a large power in watts. There is 100,000 mW in the large and 30,000-50,000 mW in the others.



2 pcs WAVE RLT Large put together with 3 Small Belts for a giant WAVE RLT for the top line

# How to use the WAVE RLT PEN

In our WAVE RLT PEN we use a combination of 3 different LEDs, which are selected to give the best biological effect anywhere on the body.

The 3 light waves are 660 nm red light, 730 deep red light (very little visible) & 850 nm near-infrared light (invisible to the human eye)

Note that only one light is visible to the human eye - the other 2 emit light waves that you cannot see. This is normal.

Some horses experience the effect of light therapy almost immediately, others experience it over a long period of about 3 weeks.

It depends a lot on the injury.

We recommend using a 3-week plan - before comparing the effect.

If you experience the effect immediately, continue treatment.

If you do not experience a horse reaction then it is also normal. Simply continue treatment, but increase treatments from 1 time a day, to 3 times a day, lasting up to 3 minutes, for 3 weeks.

After 3 weeks of constant treatment, most horses will notice a change.

If the horse is being treated with another product, do not stop that treatment suddenly when you start light therapy unless you feel that the treatment is not working.

You can easily continue your treatment from the vet, but always consult your veterinarian if it has any adverse effect if you are treated with light therapy.

Vets will rarely ask you NOT to use light therapy.

Hold the WAVE RLT PEN over the area you want to treat. You can either hold it all the way to the skin, or up to 15 cm from. The farther away the weaker treatment.

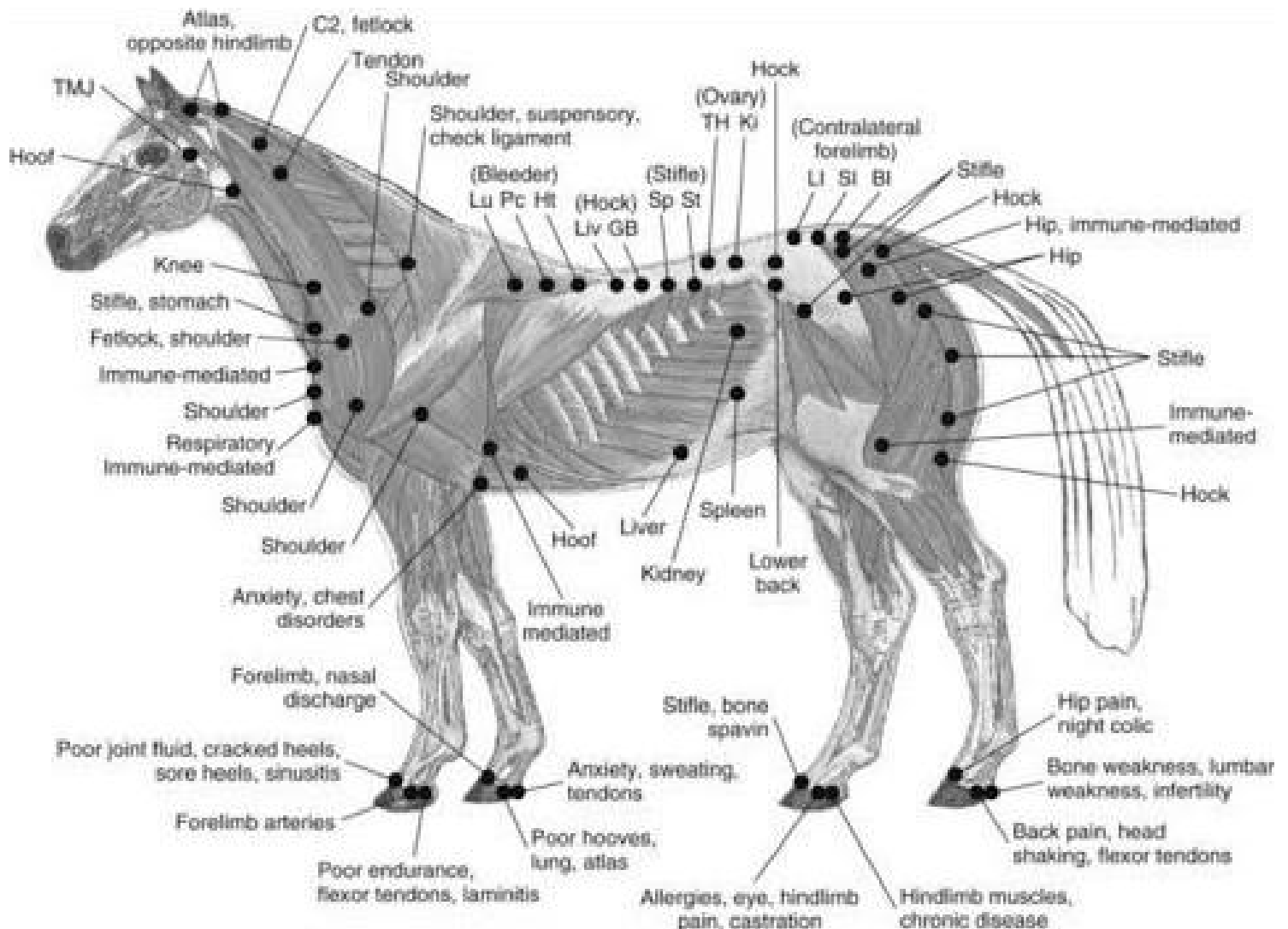
Do not use WAVE RLT PEN for more than 5 minutes at a time. Take a break between each treatment of about 1 minute or until the device has cooled down a bit. This will prevent the device from overheating.

Injuries/Pain	Light injuries/light pain	Moderate injuries/pain	Severe injuries/pain
Dose	1 minut - once a day	2 mintus - twice a day	3 minuts - 3 times a day

# WAVE RLT PEN & triggerpoints

You can use the acupuncture points found on horses. You can also use it directly on wounds or sacoids, fungal infections or other skin diseases.

Here you have a drawing of the areas you can affect.  
But always consult a veterinarian when in doubt.



# Triggerpoints in the horses head

You can use the acupuncture points found on horse with both WAVE RLT PEN & WAVE RLT Pads

You can also use it directly on wounds or sacoids, fungal infections or other skin conditions.

Here you have a drawing of the areas you can affect.

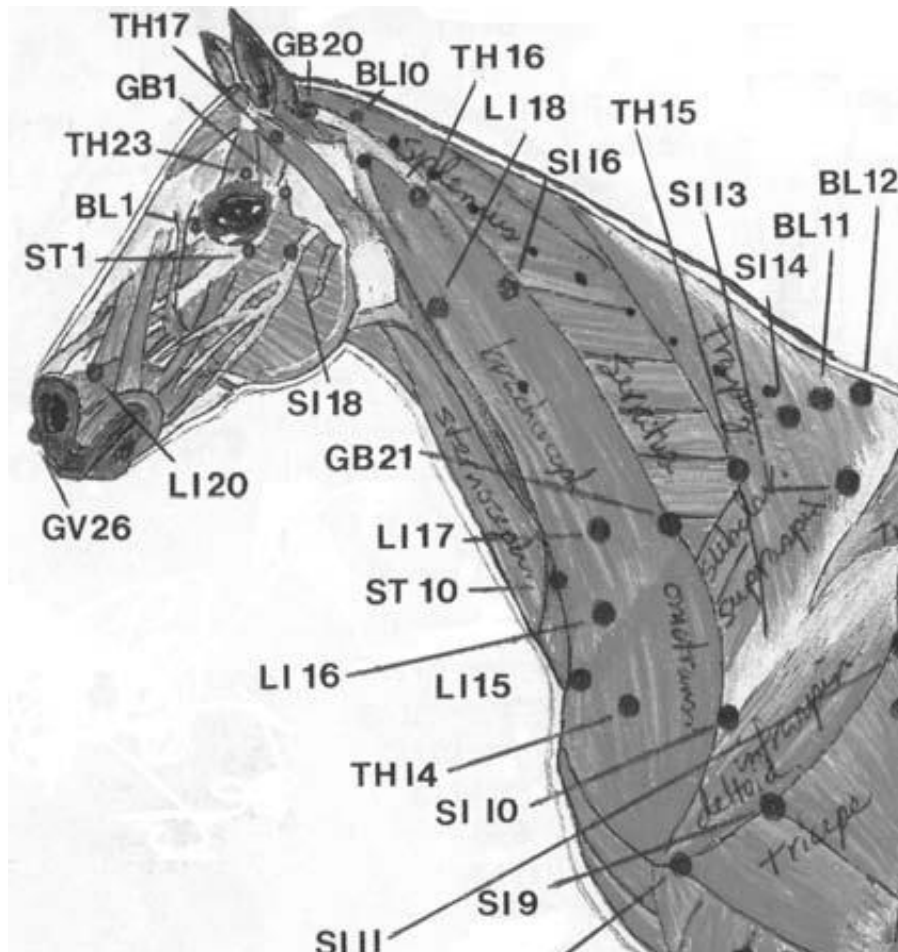
But always consult a veterinarian when in doubt.

They will definitely want to show you where you can provide treatment on your horse.

Remember that light therapy has no side effects.

So it is safe for you to use.

Remember to keep the light away from eyes - and never look directly into the WAVE RLT PEN!





# WAVE HALTER

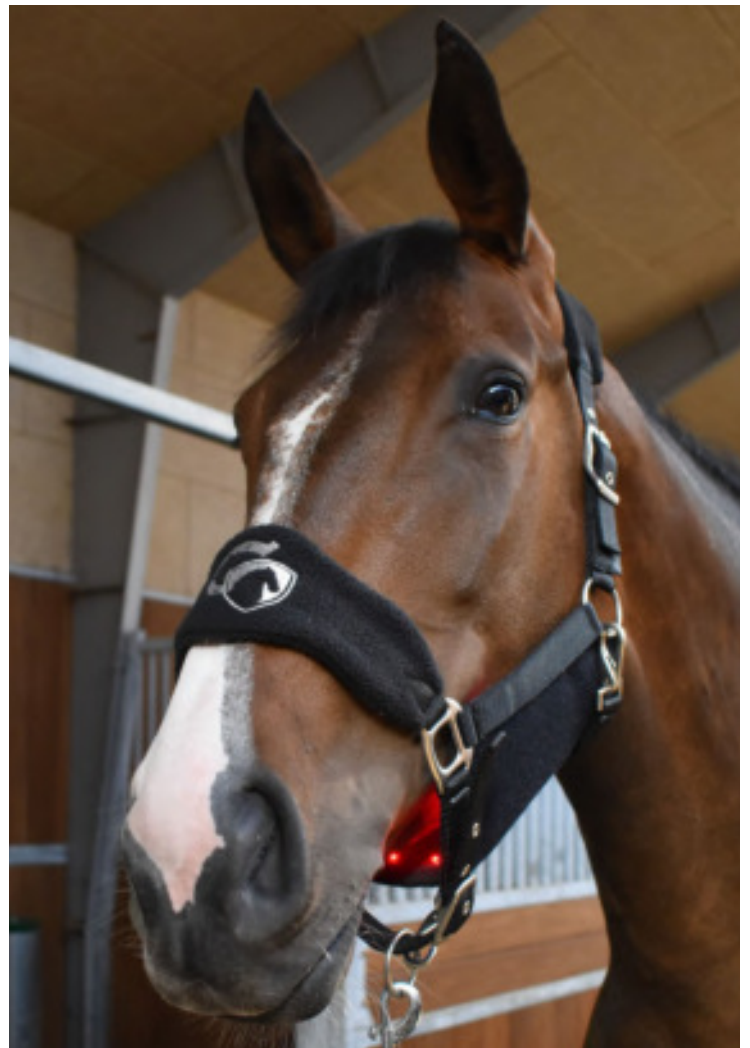
WAVE HALTER is a halter that we have made to make things easy for you. It can be opened from both sides with carabines, and the entire lower part can be removed with the 3 carabines, so you can very easily apply WAVE RLT without damaging it by pressing it under your normal halter.

There are 3 points where you can remove velcro so WAVE RLT sits 100% correctly on your horse's head.

It comes in sizes Shetland, Pony, Cob, Full & X-Full

Price 66,- Euro

NOTE - WAVE RLT PAD not included



# WAVE THERAPY BOOTS

WAVE THERAPY BOOTS are made for the purpose of being able to protect the WAVE Pad when used on the legs.

It also has a function in itself as the innermost insert is a FIR insert which supplies the tissue with infrared heat which increases blood circulation.

We are constantly coming up with new insoles that can be used with WAVE RLT or just used alone in our multifunctional gaiters.

You can use both WAVE RLT with or without FIR THERAPY PAD. Comes in sets of 2 in Pony / Cob or Full / X-Full  
Price 105,- Euro





# WAVE RLT PEN

Smart small handheld light therapy pen for the places where you need intense treatment and where it is difficult to get to.

Good for acupuncture points, trigger points, inside ear, small wounds, sacoids, hooves, knee injuries, spot treatment.

Comes with 3 wavelengths

Red light: 660 nm - visible

Deep red light: 730 nm - very faintly visible

Near-infrared light: 850 nm - not visible

Processing time 1-3 minutes

Irridiance: 217 mW / cm<sup>2</sup>

Turn off after 5 minutes of use

Case including safety goggles, cleaning cloth for the lens, charger, 2 rechargeable batteries, and a strap that can be attached to the bottom of the WAVE RLT PEN

Price: 170,- Euro



# WAVE RLT SMALL

Dimensions: 23 x 35.5 cm

Wavelength: 660 nm & 850 nm

Effect: 30.000 mW

Irridiance: 77,8 mW/cm<sup>2</sup>

Quantity: 40 red LEDs and 40 Near-infrared LEDs total 80 LED lights (combined in 40 LED lights)

INCL: 3 pcs Wave Belts S + 1 pc Wave Belt XL  
Battery with velcro, charger, storage case & instructions

PRICE: 600,- Euro

Can be put in WAVE BOOTS & WAVE HALTER  
Good for joints, head, knees, hocks, hips and sternum  
Can also be used on shoulder and lower back.



# WAVE RLT SMALL & 1 set of THERAPY BOOTS

Dimensions: 23 x 35.5 cm

Wavelength: 660 nm & 850 nm

Effect: 30.000 mW

Irridiance: 77,8 mW/cm<sup>2</sup>

Quantity: 40 red LEDs and 40 Near-infrared LEDs total 80 LED lights (combined in 40 LED lights)

INCL: 3 pcs Wave Belts S + 1 pc Wave Belt XL + 1 set of Therapy Boots (2 pieces)  
Battery with velcro, charger, storage case & instructions

PRICE: 600,- Euro Special offer!

Good for joints, head, knees, hocks, hips and sternum  
Can also be used on shoulder and lower back.



# 2 WAVE RLT SMALL & 1 set of THERAPY BOOTS

Dimensions: 23 x 35.5 cm

Wavelength: 660 nm & 850 nm

Effect: 30.000 mW on each pad

Irridiance: 77,8 mW/cm<sup>2</sup>

Quantity: 40 red LEDs and 40 Near-infrared LEDs total 80 LED lights (combined in 40 LED lights)  
total of 160 LED in both pads together

INCL: 3 pcs Wave Belts S + 1 pc Wave Belt XL + 1 set of Therapy Boots (2 pieces)  
2 batteries with velcro, 2 chargers, storage case & instructions

PRICE: 1065,- Euro Special offer!

For 2 legs

Good for joints, head, knees, hocks, hips and sternum

Can also be used on shoulder and lower back.



# WAVE RLT SMALL BIG PACK

Dimensions: 23 x 35.5 cm

Wavelength: 660 nm & 850 nm

Effect: 30.000 mW

Irridiance: 77,8 mW/cm2

Quantity: 40 red LEDs and 40 Near-infrared LEDs total 80 LED lights (combined in 40 LED lights)

1 luxury suitcase

1 pc optional WAVE halter

2 sets of WAVE THERAPY BOOTS (a total of 4 pcs)

1 pc WAVE RLT SMALL

2 x Small strap 2 x Medium strap 2 x Large strap

1 x Xlarge strap 2 x XXL strap 1 x 3 XL strap

Battery with velcro, charger & instructions

PRICE: 825,- Euro

A perfect set for treating your horse or other animals



# WAVE RLT MEDIUM

Dimensions: 29 x 53 cm

Wavelength: 660 nm & 850 nm

Effect: 50.000 mW

Irridiance: 77,8 mW/cm<sup>2</sup>

Quantity: 60 red LEDs and 60 Near-infrared LEDs total 120 LED lights (combined in 60 LED lights)

1 pc Wave Belt L

1 pc Wave Belt XL

1 pc Wave Belt XXL

1 pc Wave Belt 3XL

Battery with velcro, charger, storage case & instructions

PRICE: 730,- Euro

For the larger muscle groups, neck, jaw, stifle, neck, back knee & lower back





# WAVE RLT MEDIUM & 1 set of THERAPY BOOTS

Dimensions: 29 x 53 cm

Wavelength: 660 nm & 850 nm

Effect: 50.000 mW

Irridiance: 77,8 mW/cm<sup>2</sup>

Quantity: 60 red LEDs and 60 Near-infrared LEDs total 120 LED lights (combined in 60 LED lights) in each pad

1 pc Wave Belt L

1 pc Wave Belt XL

1 pc Wave Belt XXL

1 pc Wave Belt 3XL

1 set of THERAPY BOOTS (2 pieces)

1 Battery with velcro, 1 charger, storage case & instructions

PRICE: 773,- Euro

For the larger muscle groups, neck, jaw, stifle, neck, back knee & lower back



# 2 WAVE RLT MEDIUM & 1 set of THERAPY BOOTS

Dimensions: 29 x 53 cm

Wavelength: 660 nm & 850 nm

Effect: 50.000 mW

Irridiance: 77,8 mW/cm<sup>2</sup>

Quantity: 60 red LEDs and 60 Near-infrared LEDs total 120 LED lights (combined in 60 LED lights) in each pad

1 pc Wave Belt L

1 pc Wave Belt XL

1 pc Wave Belt XXL

1 pc Wave Belt 3XL

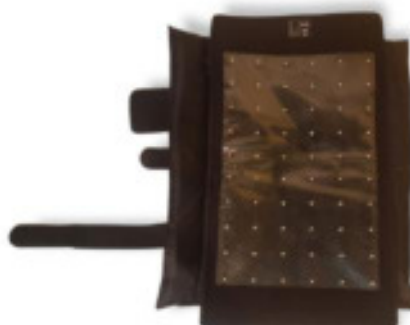
1 set of THERAPY BOOTS (2 pieces)

2 Batteries with velcro, 2 chargers, storage case & instructions

PRICE: 1295,- Euro

for 2 legs

For the larger muscle groups, neck, jaw, stifle, neck, back knee & lower back





# WAVE RLT MEDIUM BIG PACK

Dimensions: 29 x 53 cm

Wavelength: 660 nm & 850 nm

Effect: 50.000 mW

Irridiance: 77,8 mW/cm<sup>2</sup>

Quantity: 60 red LEDs and 60 Near-infrared LEDs total 120 LED lights (combined in 60 LED lights)

1 luxury suitcase

1 pc optional WAVE halter

2 sets WAVE THERAPY BOOTS (total 4 pcs)

1 pc WAVE RLT MEDIUM

2 x Small strap

2 x Medium strap

2 x Large strap

1 x Xlarge strap

2 x XXL strap

1 x 3XL strap

Battery with velcro, charger & instructions

PRICE: 1000,- Euro

A perfect set for treating your horse or other animals



# WAVE RLT LARGE

Dimensions: 44 x 85 cm

Wavelength: 660 nm & 850 nm

Effect: 100.000 mW

Irridiance: 77,8 mW/cm<sup>2</sup>

Quantity: 180 red LEDs and 180 Near-infrared LEDs total 360 LED lights (combined in 180 LED lights)

2 pcs Wave Belts XL

1 pc Wave Belt XXL

1 pc Wave Belt 3XL

Battery with velcro, charger, storage case & instructions

PRICE: 1300,- Euro

For the larger muscle groups & lower back



# WAVE RLT XLARGE OVERLINIE

Dimensions: 44 x 85 cm x 2 (covers 88 x 95 cm when assembled)

Wavelength: 660 nm & 850 nm

Effect: 200.000 mW (each 100.000 nW)

Irridiance: 77,8 mW/cm<sup>2</sup>

Quantity: 360 red LEDs and 360 Near-infrared LEDs total 720 LED lights (combined in 360 LED lights)

1 luxury suitcase

3 pcs Wave Belts S to put Wave Pads together with

2 pcs Wave Belts XL

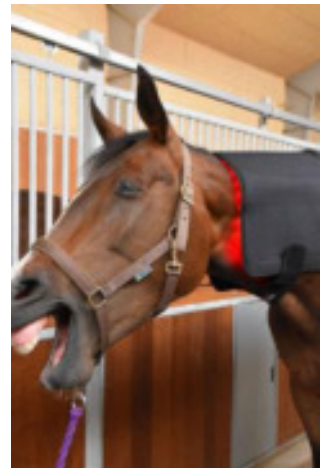
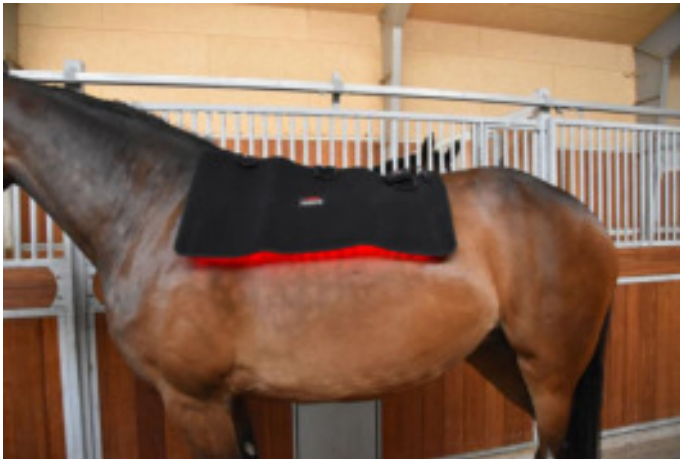
2 pcs Wave Belt XXL

2 pcs Wave Belt 3XL

2 pcs Batteries with velcro, 2 pcs charger, large storage case & Guide

PRICE: 2399,- Euro

For the larger muscle groups & lower back



# WAVE RLT XX-LARGE NECK & TOPLINIE

Wavelength: 660 nm & 850 nm

Effect: 200.000 mW (each 100.000 mW)

Irridiance: 77,8 mW/cm<sup>2</sup>

Quantity: 400 red LEDs and 400 near-infrared LEDs total 800 LEDs  
(combined in 400 LEDs)

2 pcs Medium belts

2 pcs Large belts

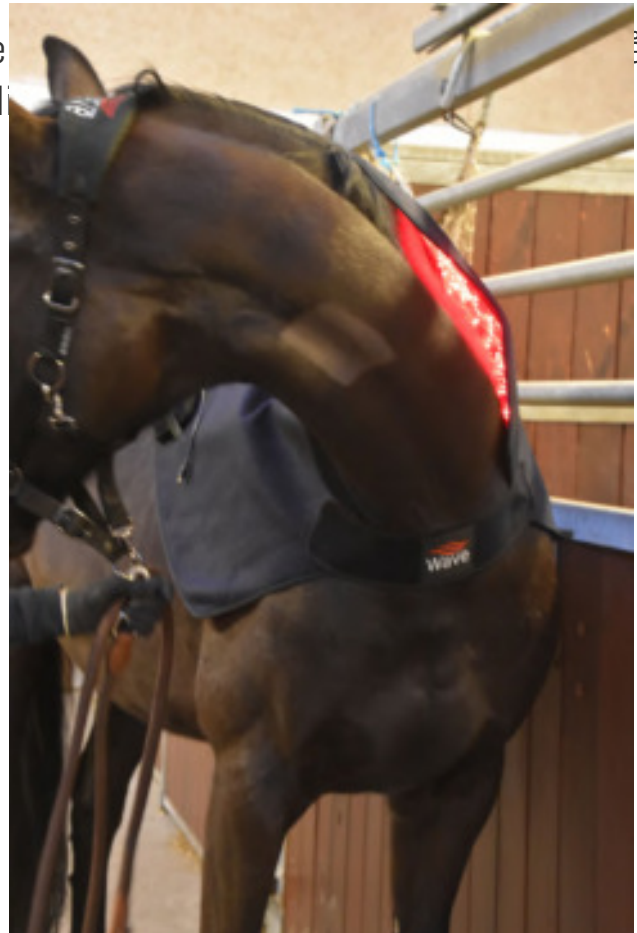
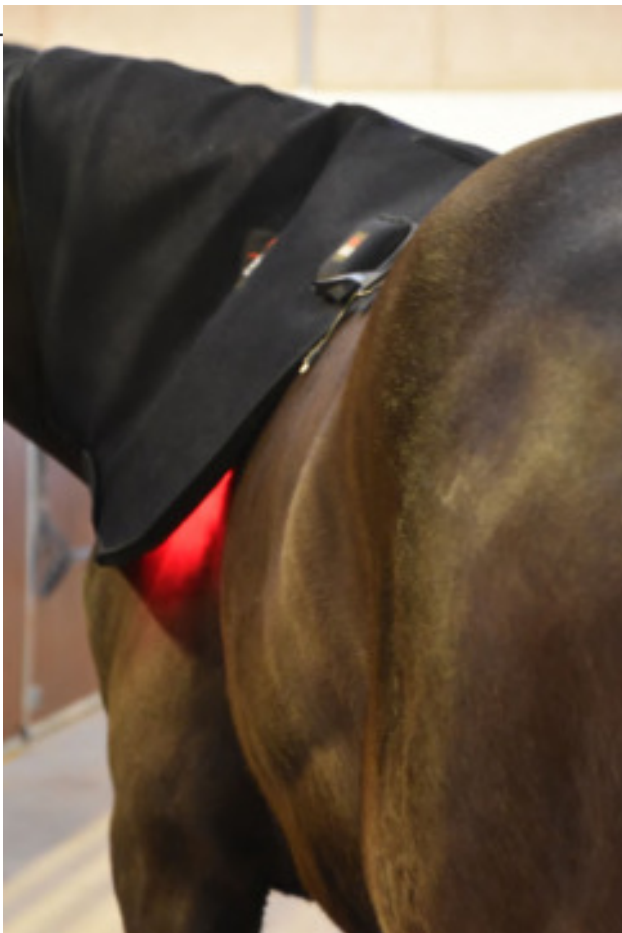
1 pcs XL belts

1 pcs 3XL belts

2 Batteries with velcro, 2 charger, X-Large storage case &  
Guide

PRICE: 3.300,- Euro

For the larger muscle groups. New design. It stays close to the skin, because of the curved design, and makes the treatment more effective, also on the lower back.





# WAVE RLT BELL BOOTS

1 Bell boot with velcro top and neoprene back with plastic window

1 S belt, 1 M belt, 1 L belt (straps)

Rechargeable Lithium-ion battery 11.1V / 2200mAh with velcro

Charger DC 12.6 V - Charging current: 0.2-1C

Beautiful travel case with zipper in shockproof EVA material

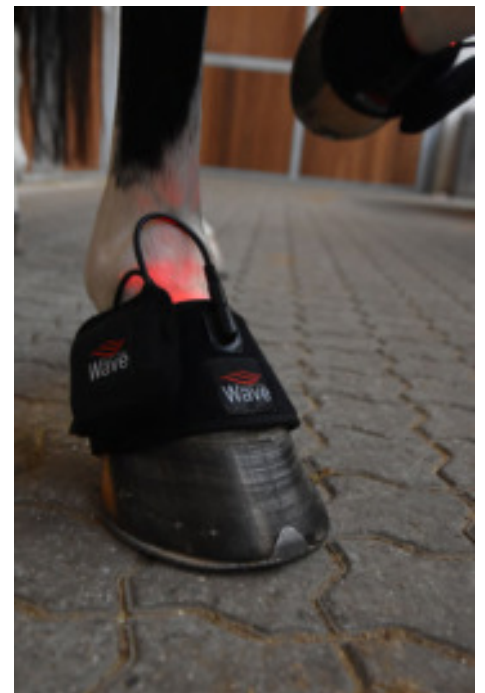
Manual with instructions for use and pictures and instructions for the use of all our products

Can be used as a bell boot, placed on knee, hock, smaller joints, on the forehead on the horse, etc.

Due to the design, it can be easily put where you need to do the treatment.

Or put together with other of our products, for a new product. For example to make a pole cap together with a SMALL or MEDIUM WAVE RLT

Price 319,- Euro



# 2 WAVE RLT BELL BOOTS

2 Bell boot with velcro top and neoprene back with plastic window

2 S belt, 2 M belt, 2 L belt (straps)

Rechargeable Lithium-ion battery 11.1V / 2200mAh with velcro

Charger DC 12.6 V - Charging current: 0.2-1C

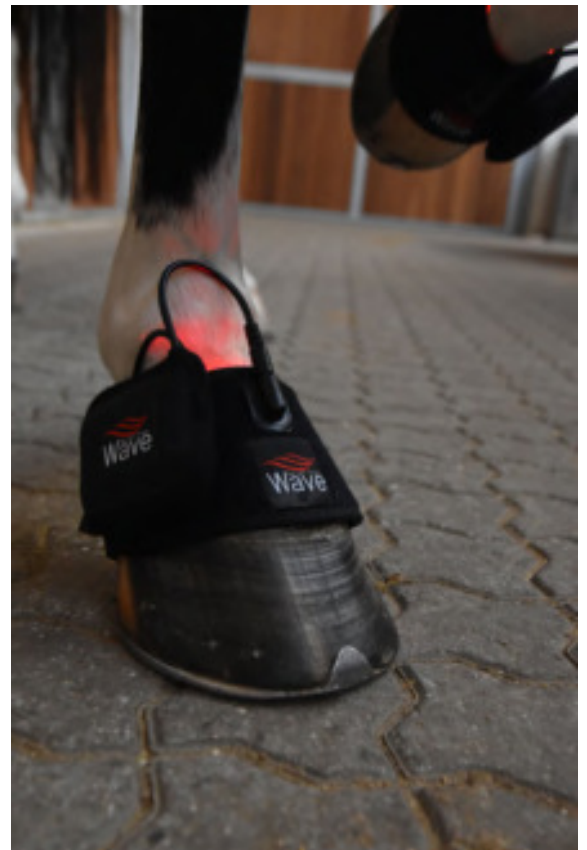
Beautiful alu storage case

Manual with instructions for use and pictures and instructions for the use of all our products

Can be used as a bell boot, placed on knee, hock, smaller joints, on the forehead on the horse, etc.

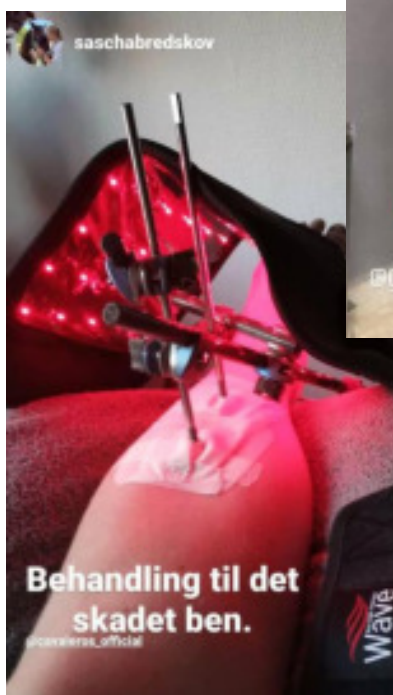
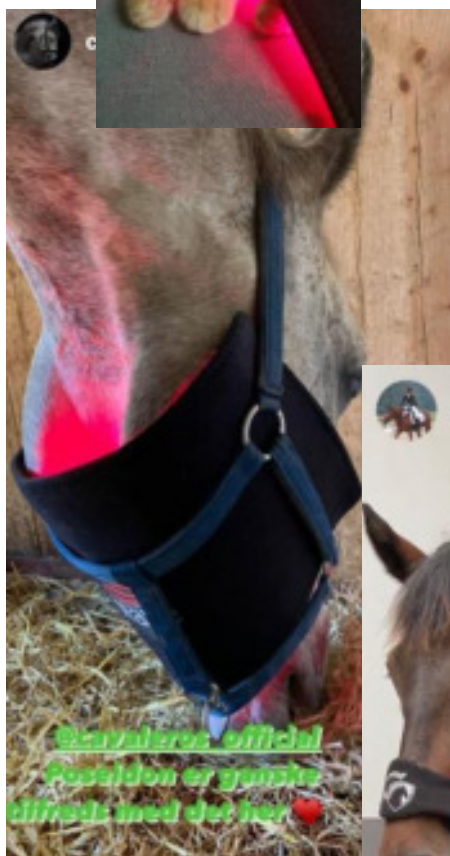
Due to the design, it can be easily put where you need to do the treatment. Or put together with other of our products, for a new product. For example to make a pole cap together with a SMALL or MEDIUM WAVE RLT

Price 600,- Euro





# Customer-photos





  
Red Light Therapy  
**Wave**  
Part of Cavaleros

[www.cavaleros.dk](http://www.cavaleros.dk)

Middelfartvej 6E, Dk-4200 Slagelse - Tlf.: +45 6073 7722